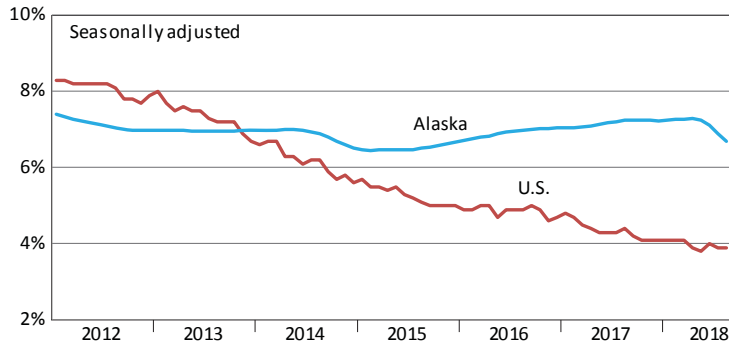


Unemployment Rates, Alaska and U.S.

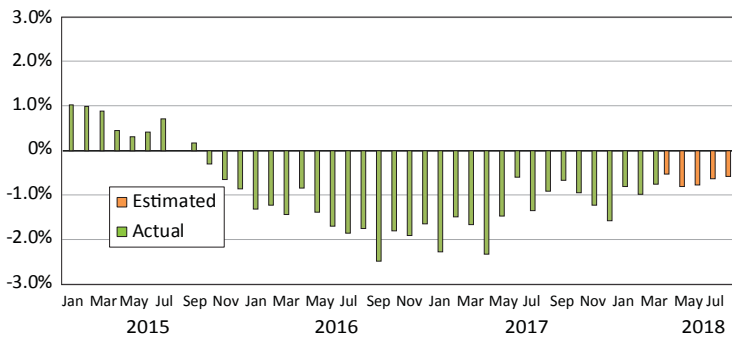
January 2012 to August 2018



Sources: Alaska Department of Labor and Workforce Development, Research and Analysis Section; and U.S. Bureau of Labor Statistics

Wage and Salary Employment

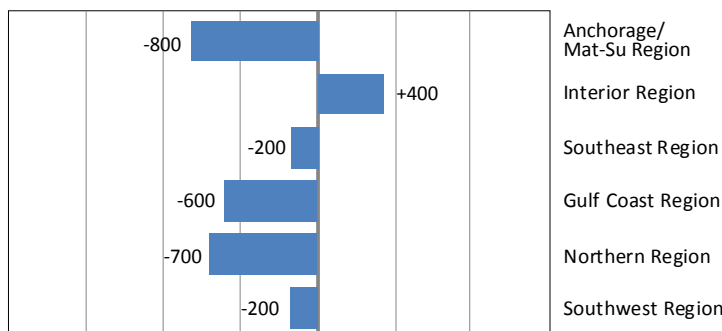
Percent change from same month the previous year



Source: Alaska Department of Labor and Workforce Development, Research and Analysis Section

Regional Employment

August 2018, change from August 2017



Source: Alaska Department of Labor and Workforce Development, Research and Analysis Section

Area Unemployment Rates

Not seasonally adjusted¹

	Rate		
	8/18 ^P	7/18	8/17
Alaska	5.4	5.8	6.4
Anchorage/Mat-Su Region	5.1	5.4	6.1
Anchorage, Municipality	4.7	5.0	5.6
Matanuska-Susitna Borough	6.4	6.9	7.8
Gulf Coast Region	5.3	5.7	6.1
Kenai Peninsula Borough	5.8	6.1	7.0
Kodiak Island Borough	4.5	5.5	4.0
Valdez-Cordova Census Area	4.1	4.2	4.8
Interior Region	4.9	5.7	6.2
Denali Borough	2.7	3.0	3.5
Fairbanks North Star Borough	4.4	5.1	5.5
Southeast Fairbanks Census Area	7.5	8.6	8.8
Yukon-Koyukuk Census Area	13.0	15.4	16.9
Northern Region	10.6	11.6	12.6
Nome Census Area	11.8	12.6	13.4
North Slope Borough	6.6	7.1	7.9
Northwest Arctic Borough	13.9	15.8	16.9
Southeast Region	4.2	4.4	4.9
Haines Borough	5.2	5.5	5.2
Hoonah-Angoon Census Area	6.7	7.4	7.5
Juneau, City and Borough	3.5	3.7	4.1
Ketchikan Gateway Borough	4.1	4.2	4.6
Petersburg Borough	5.8	6.1	7.5
Prince of Wales-Hyder CA	8.4	8.9	9.3
Sitka, City and Borough	3.0	3.3	3.7
Skagway, Municipality	2.7	3.0	2.7
Wrangell, City and Borough	4.7	4.8	6.4
Yakutat, City and Borough	7.3	7.5	8.2
Southwest Region	8.8	8.9	9.8
Aleutians East Borough	1.6	1.7	1.6
Aleutians West Census Area	2.8	2.7	2.9
Bethel Census Area	13.1	13.6	14.6
Bristol Bay Borough	3.6	1.8	4.1
Dillingham Census Area	5.9	6.1	7.8
Kusilvak Census Area	17.9	22.4	19.2
Lake and Peninsula Borough	8.9	8.2	9.8

P = Preliminary. As more information becomes available, data are revised every month for the previous month and again at the end of every calendar year.

Note: The official definition of unemployment excludes anyone who has not made an active attempt to find work in the four-week period up to and including the week that includes the 12th of the reference month.

¹Unemployment rates that are not seasonally adjusted should not be compared with those that are.

Sources: Alaska Department of Labor and Workforce Development, Research and Analysis Section; and U.S. Bureau of Labor Statistics

Employment By Industry

	Average Monthly Employment			Compared to Aug 2017	
	Aug 2018	July 2018	Aug 2017	Change	Percent
Total Nonfarm Employment	348,800	351,200	350,800	-2,000	-0.6%
Total Private	272,200	275,800	273,900	-1,700	-0.6%
Mining and Logging	13,100	13,000	13,500	-400	-3.0%
Oil and Gas	9,400	9,400	9,800	-400	-4.1%
Construction	18,400	18,300	18,100	300	1.7%
Manufacturing	20,500	23,600	20,800	-300	-1.4%
Trade, Transportation and Utilities	68,600	68,700	69,400	-800	-1.2%
Wholesale	6,500	6,400	6,500	0	0.0%
Retail	36,800	37,200	37,800	-1,000	-2.6%
Transportation, Warehousing and Utilities	25,300	25,100	25,100	200	0.8%
Information	5,600	5,700	5,900	-300	-5.1%
Financial Activities	12,400	12,400	12,600	-200	-1.6%
Professional and Business Services	28,900	28,900	29,300	-400	-1.4%
Education and Health	50,600	50,600	50,000	600	1.2%
Health Care	38,500	38,400	37,800	700	1.9%
Leisure and Hospitality	43,000	43,500	43,200	-200	-0.5%
Other Services	11,100	11,100	11,100	0	0.0%
Total Government	76,600	75,400	76,900	-300	-0.4%
Federal ¹	15,700	15,900	15,600	100	0.6%
State ²	23,000	22,300	23,000	0	0.0%
Local ³	37,900	37,200	38,300	-400	-1.0%

¹Excludes uniformed military

²Includes the University of Alaska

³Includes public schools and tribal government

Source: Alaska Department of Labor and Workforce Development, Research and Analysis Section