

State of Alaska Department of Labor & Workforce Development



Heidi Drygas
Commissioner

Heather Beaty
Communications
Director

907.269.3569
heather.beaty@alaska.gov

FOR IMMEDIATE RELEASE
January 19, 2017

No. 18-02

For more information: Karinne Wiebold, Economist
907-465-6039, Karinne.Wiebold@Alaska.Gov

Employment Down 1.0 Percent, Unemployment Rate at 7.3 Percent

JUNEAU, Alaska—Alaska's total employment was down by an estimated 1.0 percent in December compared to December 2016, a loss of about 3,300 jobs.

Oil and gas employment was down 8.6 percent and construction employment by 6.7 percent. Health care was the only industry to add jobs. Transportation, warehousing, and utilities remained at the same level as last year, as did the other services industry, which includes repair, maintenance, and personal services. Both state and federal government employment were down 1.3 percent.

Alaska's seasonally adjusted unemployment rate inched up one-tenth of a percentage point to 7.3 percent after holding steady at 7.2 percent since August. The comparable national rate for December was 4.1 percent.

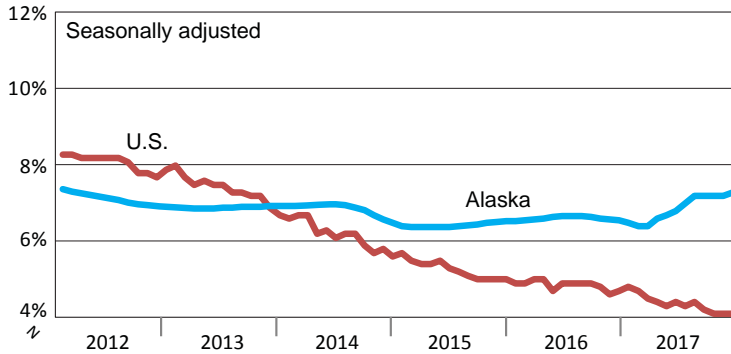
Alaska's not-seasonally adjusted rate was also 7.3 percent, up two-tenths of a percentage point from November. Unemployment rates were up in 22 of 29 boroughs and census areas. As is common in the winter, the highest rates were in the Denali Borough and Skagway, where most employment is tied to summer tourism.

Unemployment rates fell in five boroughs and census areas and were flat in Anchorage and Ketchikan. The rate decreases were in Yakutat, Skagway, the Northwest Arctic Borough, the North Slope Borough, and the Southeast Fairbanks Census Area.

###

Unemployment Rates, Alaska and U.S.

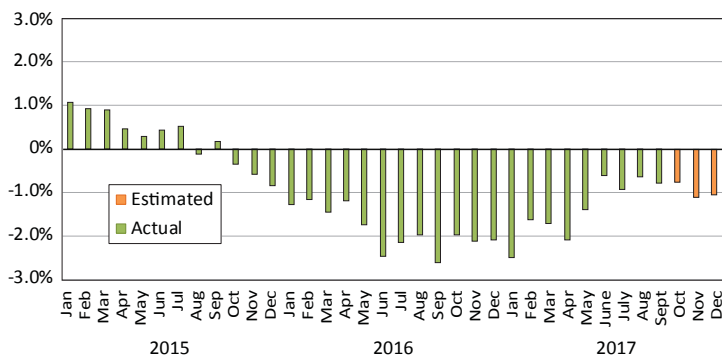
January 2012 to December 2017



Sources: Alaska Department of Labor and Workforce Development, Research and Analysis Section; and U.S. Bureau of Labor Statistics

Wage and Salary Employment

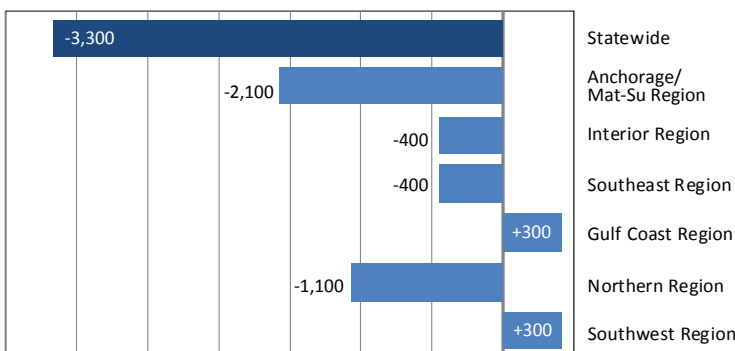
Percent change from same month the previous year



Note: Actual employment counts for 2016 are from the benchmarked Current Employment Statistics and Quarterly Census of Employment and Wages employment series. Estimated employment counts from 2017 are based on a forecast of the QCEW series.

Regional Employment

Change from same month the previous year



Source: Alaska Department of Labor and Workforce Development, Research and Analysis Section

Area Unemployment Rates

Not seasonally adjusted¹

	Rate		
	12/17 ^P	11/17	12/16
Alaska	7.3	7.1	6.6
Anchorage/Mat-Su Region	6.4	6.3	5.7
Anchorage, Municipality	5.7	5.7	5.1
Matanuska-Susitna Borough	8.7	8.3	8.0
Gulf Coast Region	8.8	8.2	8.0
Kenai Peninsula Borough	8.9	8.7	8.0
Kodiak Island Borough	7.3	4.8	6.7
Valdez-Cordova Census Area	9.9	9.5	9.3
Interior Region	7.5	7.3	6.6
Denali Borough	20.6	20.2	18.2
Fairbanks North Star Borough	6.6	6.3	5.7
Southeast Fairbanks Census Area	10.8	10.9	9.8
Yukon-Koyukuk Census Area	18.0	17.6	16.8
Northern Region	10.8	11.2	10.4
Nome Census Area	12.2	12.0	11.4
North Slope Borough	6.3	7.0	5.9
Northwest Arctic Borough	14.5	15.6	15.5
Southeast Region	7.2	6.9	6.4
Haines Borough	13.4	12.7	11.1
Hoonah-Angoon Census Area	18.7	16.6	14.0
Juneau, City and Borough	5.1	4.9	4.5
Ketchikan Gateway Borough	7.0	7.0	6.4
Petersburg Borough	10.1	9.2	9.8
Prince of Wales-Hyder CA	12.3	11.7	11.6
Sitka, City and Borough	5.0	4.7	4.2
Skagway, Municipality	20.0	21.2	20.6
Wrangell, City and Borough	8.8	8.6	7.7
Yakutat, City and Borough	11.0	11.4	9.0
Southwest Region	12.3	11.4	11.2
Aleutians East Borough	5.9	4.3	4.7
Aleutians West Census Area	5.4	4.4	4.6
Bethel Census Area	13.2	13.0	12.2
Bristol Bay Borough	14.3	11.4	13.3
Dillingham Census Area	11.1	10.4	11.4
Kusilvak Census Area	19.8	19.4	18.0
Lake and Peninsula Borough	15.4	15.1	12.7

P = Preliminary. As more information becomes available, data are revised every month for the previous month and again at the end of every calendar year.

Note: The official definition of unemployment excludes anyone who has not made an active attempt to find work in the four-week period up to and including the week that includes the 12th of the reference month.

¹Unemployment rates that are not seasonally adjusted should not be compared with those that are.

Source: Alaska Department of Labor and Workforce Development, Research and Analysis Section; and U.S. Bureau of Labor Statistics

Employment By Industry

	Average Monthly Employment			Compared to Dec 2016	
	Dec 2017 ¹	Nov 2017 ¹	Dec 2016 ²	Change	Percent
Total Nonfarm Employment	311,500	313,800	314,800	-3,300	-1.0%
Total Private	230,000	232,000	233,100	-3,100	-1.3%
Mining and Logging	12,800	12,700	13,600	-800	-5.9%
Oil and Gas	9,600	9,500	10,500	-900	-8.6%
Construction	12,500	13,500	13,400	-900	-6.7%
Manufacturing	6,800	8,000	7,100	-300	-4.2%
Trade, Transportation, and Utilities	62,400	62,600	63,100	-700	-1.1%
Wholesale	6,200	6,200	6,300	-100	-1.6%
Retail	36,000	36,100	36,600	-600	-1.6%
Transportation, Warehousing, and Utilities	20,200	20,300	20,200	0	0%
Information	5,700	5,800	6,100	-400	-6.6%
Financial Activities	11,700	11,700	11,900	-200	-1.7%
Professional and Business Services	26,700	26,400	27,100	-400	-1.5%
Education and Health	49,900	49,800	49,200	700	1.4%
Health Care	37,000	36,800	36,200	800	2.2%
Leisure and Hospitality	30,700	30,700	30,800	-100	-0.3%
Other Services	10,800	10,800	10,800	0	0%
Total Government	81,500	81,800	81,700	-200	-0.2%
Federal ³	14,800	14,500	15,000	-200	-1.3%
State ⁴	23,500	23,900	23,800	-300	-1.3%
Local ⁵	43,200	43,400	42,900	300	0.7%

¹Employment estimates for 2017 are based on a forecast of Quarterly Census of Employment and Wages (QCEW) data.

²Employment estimates for 2016 are QCEW data adjusted to Current Employment Statistics definitions.

³Excludes uniformed military

⁴Includes the University of Alaska

⁵Includes public schools and tribal government